

ITE Comments on SB 743 Implementation

Erik Ruehr, VRPA Technologies, Inc.

*Chair, ITE Western District California SB 743
Task Force*

March 14, 2014



Outline

- › Introduction
- › ITE California SB 743 Task Force
- › Summary of ITE Comments
- › Case Studies
- › Next Steps

ITE California SB 743 Task Force

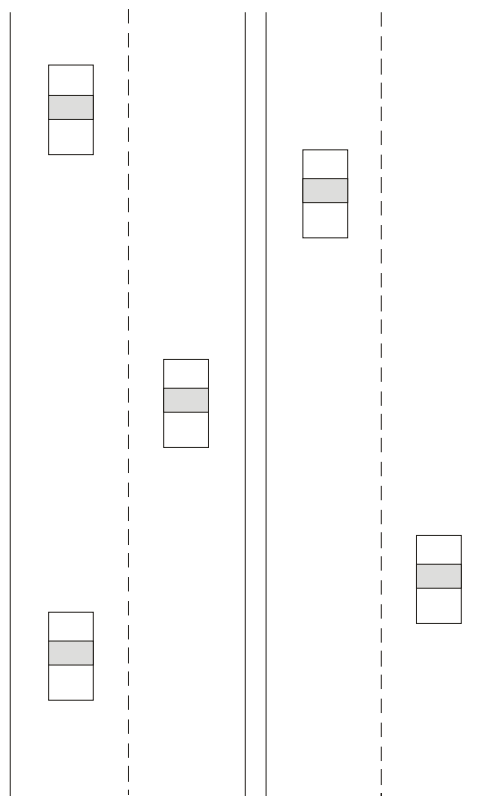
- › ITE Western District
- › ITE California Sections
- › California SB 743 Task Force
 - ✓ Seven California Section Presidents (or Representatives)
 - ✓ Western District Legislative Chair
 - ✓ Three District Board Members
 - ✓ Four "At Large" Members
- › Comment Letter
- › Other Organizations
 - ✓ OCTEC
 - ✓ CTE



Summary of ITE Comment Letter

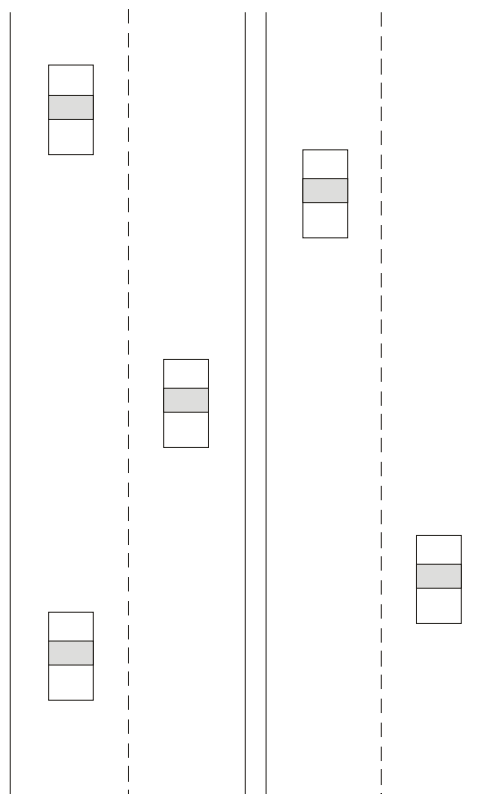
- › We Would Like to Work With OPR
- › Roadway Capacity/LOS is Still Improvement Important (Even if Not a Significant Impact Under CEQA)
- › Use Caution on VMT and Similar Performance Measures
- › Limit New Guidelines to Transit Priority Areas
- › Allow Flexibility for Projects in Transition

Case Study: Road Diet

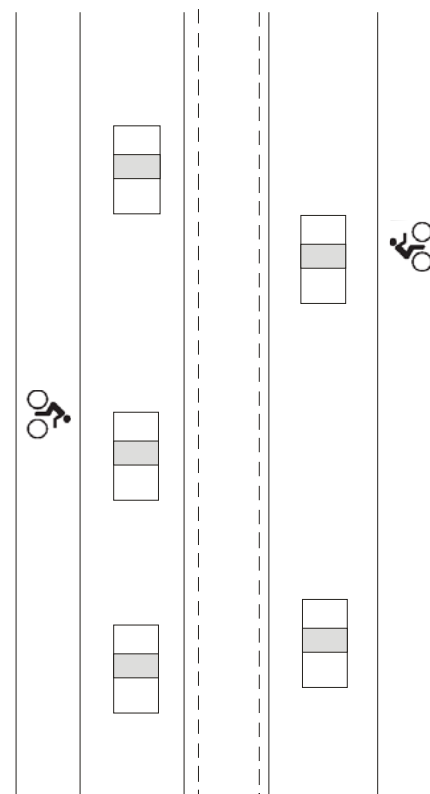


BEFORE

Case Study: Road Diet

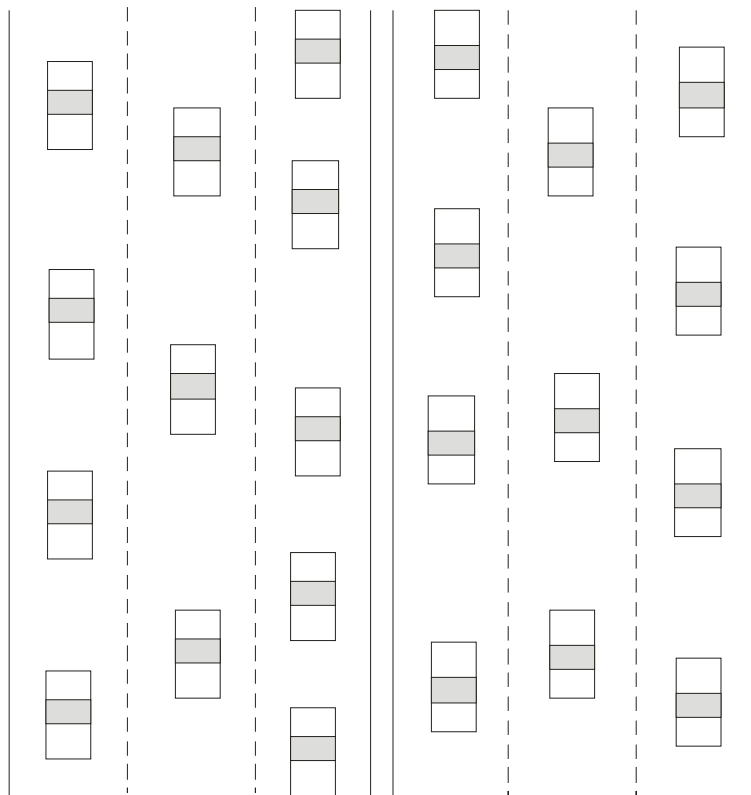


BEFORE



AFTER

Case Study: Reduce Roadway from Six Lanes to Four Lanes



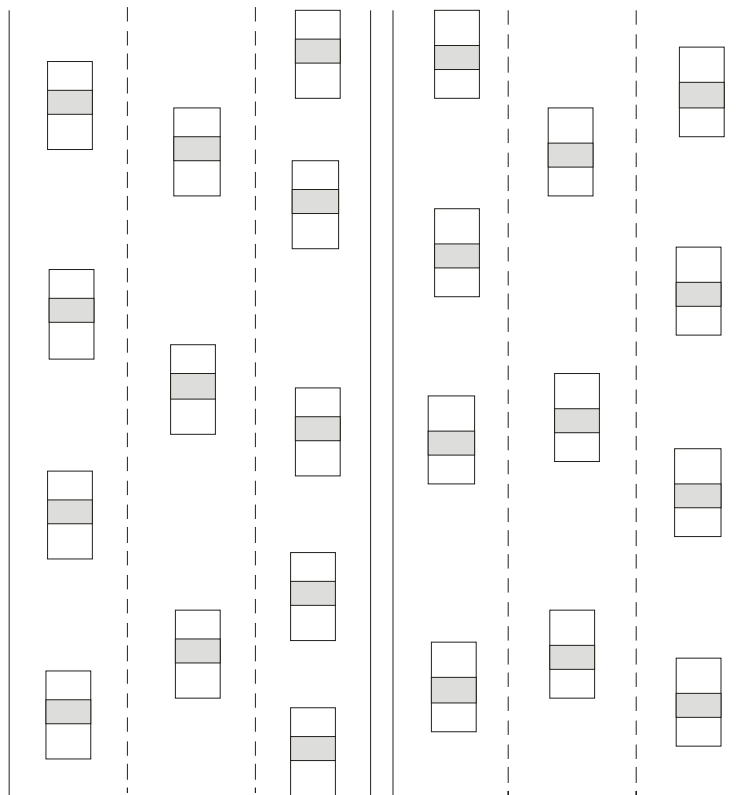
BEFORE

SB 743

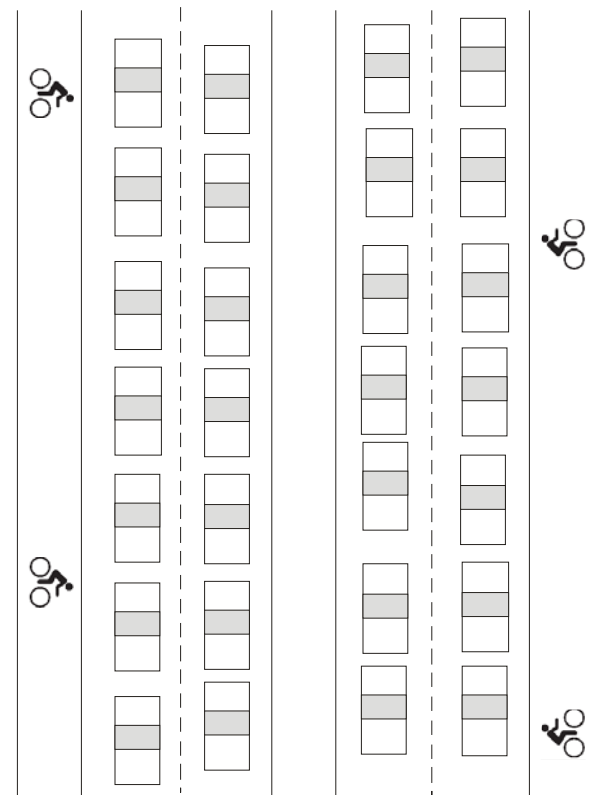
Revisions to CEQA Transportation Analyses



Case Study: Reduce Roadway from Six Lanes to Four Lanes

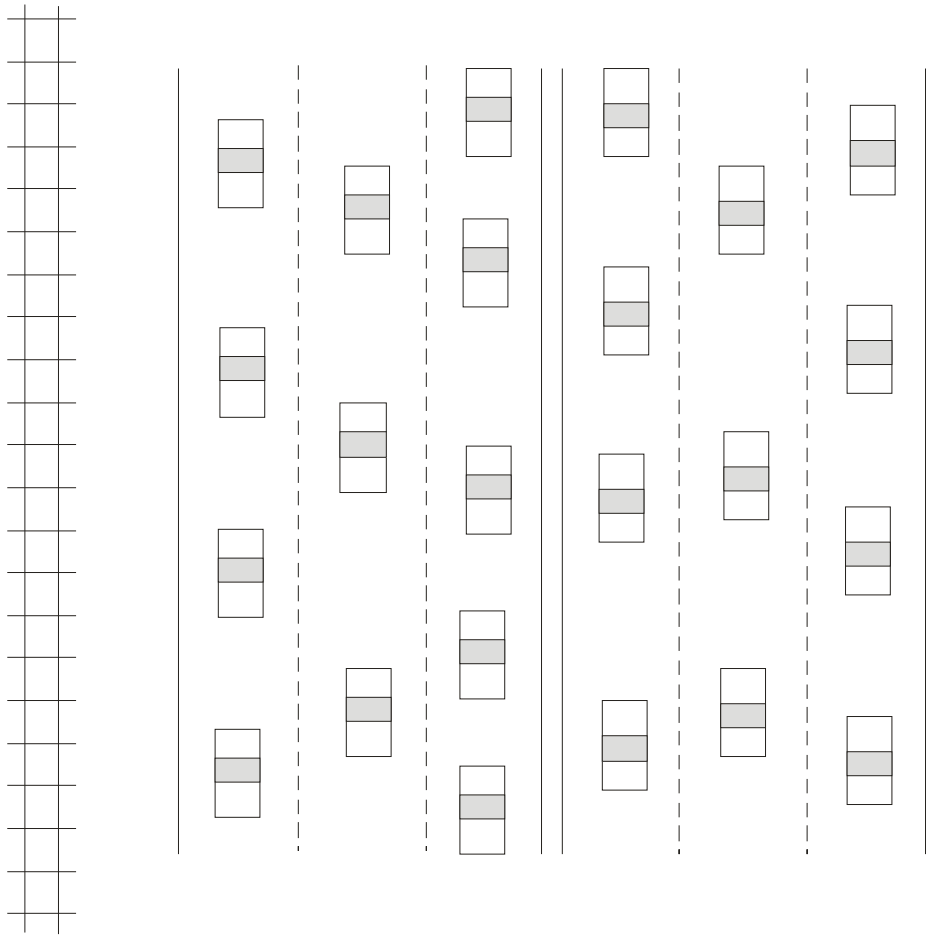


BEFORE



AFTER

Case Study: Reduce Roadway from Six Lanes to Four Lanes (With Transit)



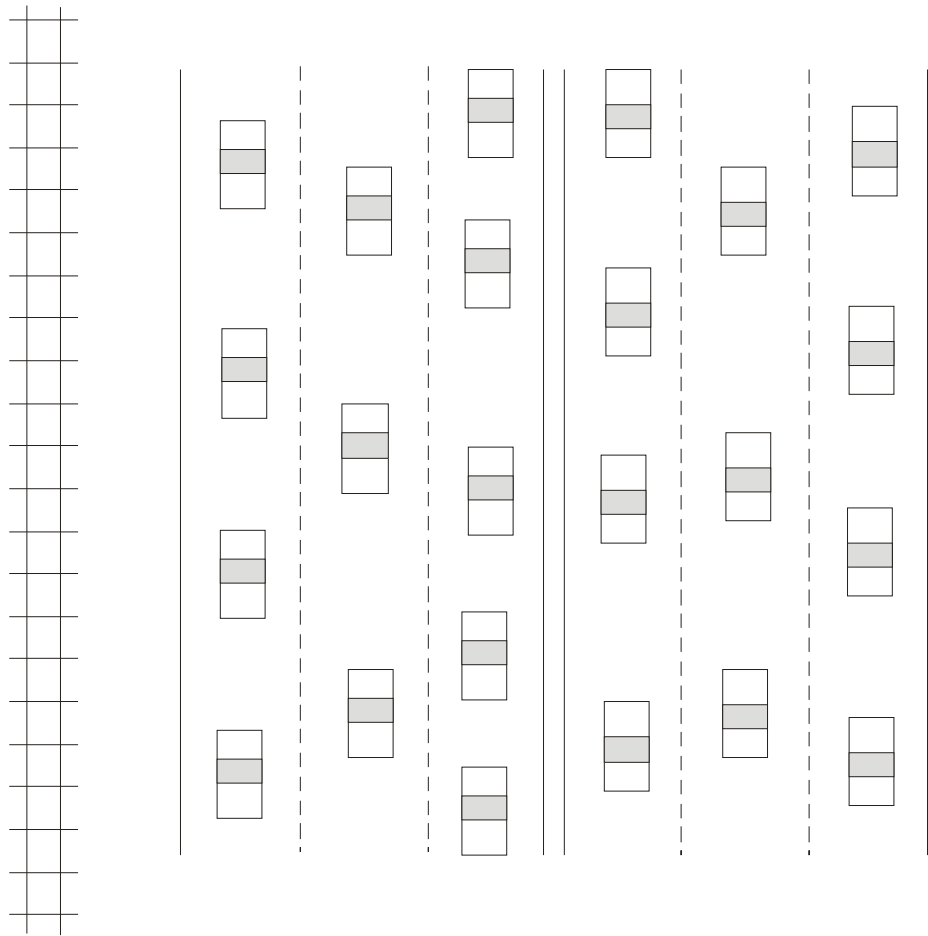
BEFORE

SB 743

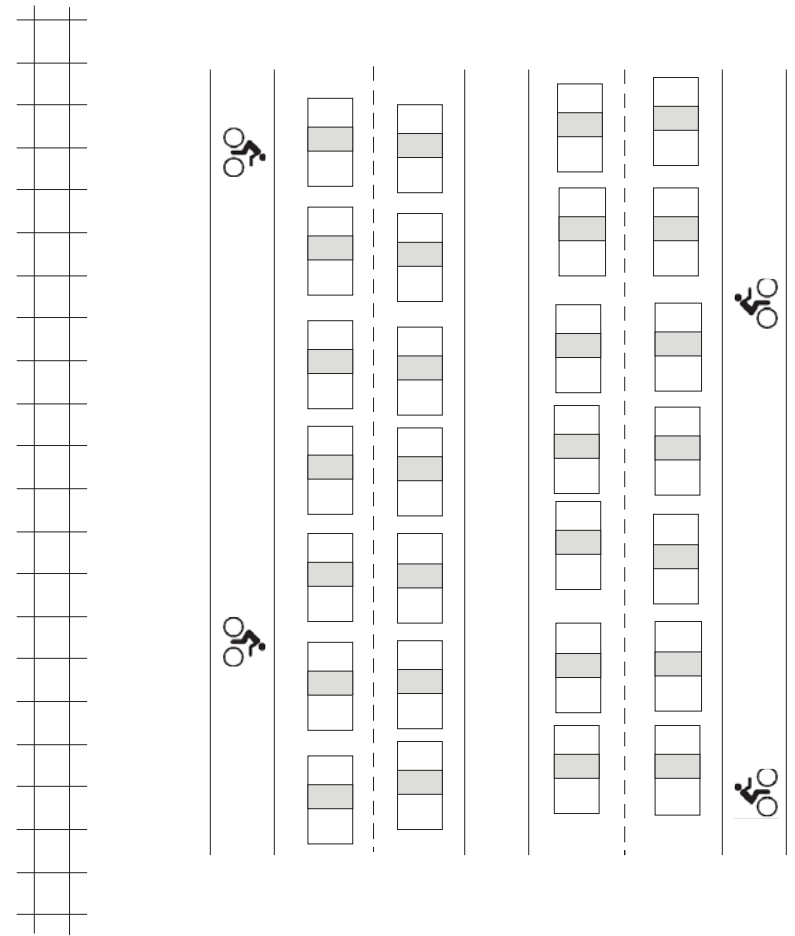
Revisions to CEQA Transportation Analyses



Case Study: Reduce Roadway from Six Lanes to Four Lanes (With Transit)



BEFORE



AFTER

Conclusions From Case Studies

- ❖ Roadway Capacity / LOS Analysis Needed to Determine Consequences of Transportation System Changes
- ❖ VMT Analysis More Appropriate Where Transit Alternatives Exist (i.e. Transit Priority Areas)

Relative Difficulty in Analyzing VMT for Various Types of CEQA Projects

Location	Type of Project			
	General Plan	Roadway	Transit/ Bicycle/ Pedestrian	Land Development
Transit Priority Area	+	++	-	+
Urban (Other)	+	++	-	+++
Rural	++	+++	-	+++

Key

- Not Challenging
- + Challenging
- ++ More Challenging
- +++ Most Challenging

Next Steps

- › Discussions with OPR
- › Draft guidelines: April/May
- › Final Guidelines Published: July 1
- › New Guidelines Take Effect: Early 2015
- › Lead Agencies Have 120 Days to Incorporate New Guidelines
- › ITE Western District Website (www.westernite.org)